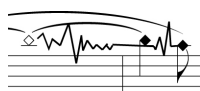


EXPLANATIONS



half-valved sounds partial engagement of a valve, half-open Diamond-shaped noteheads indicate approximate pitch.

The technique of partially engaging one, some or all of the valves causes two important results: (1) the color of the sound becomes choked-off or constricted with a lesser degree of resonance, and (2) the stability of the harmonic "notch" becomes non-existent, thus allowing for a potentially smooth slide across various pitches. This latter effect is limited, and breaks in the suggested slide occur depending on the amount of key depression, the valves engaged, the design of the specific horn's valve structure and the skill of the performer [Douglas Hill, Extended Techniques for Horn]



The image on the left shows notation of half-valved sounds combined with wide-range pitch oscillation. Change the pitch following the shape above the note, oscillating the fingers and subtly changing timbre. Treat each written note as an axis of pitch oscillation.



This symbol indicates a narrow-range pitch oscillation (1/4 – 1/6 – 1/8 tone up and down), not to be confused with a trill. Among others, it can be achieved by so-called valve-tremolo (fast changes of fingering at the same pitch, resulting in timbral changes)



Alternate between open and stopped sounds.



Half-stopped sounds.

ewa trębacz * LIGEIA (2016)

Horn in F

♩ = 76

5

mf

9

p *mp* *p* *fp*

14 (molto vibr.)

mf *p* *mf* *f* *mp* *mf*

22

f *mp* *p* *mp* *p*

27

29

p *f* *mp* *p*

31

(molto vibr.)

p *fp* *mf*

35

mf *ppp* *mf* *f* *mp* *p* *mf*

41

p *f* *f* *mf* *p* *mf*

46

pp *pp* *ff* *mp* *p* *mf*

51

p *ppp* *fp* *ff*

57 Clarinet (in C) -----

f *p* *mp* *mf* *f* *mf* *pp* *mf*

(h.v.) (ord.)

63

p *pp* *fp* *mf*

(h.v.) (ord.)

69

p *ff* *p* *pp* *p*

(h.v.) (ord.)

75 **78**

p *pp*

82 **84**

p *pp*

half-valved, with airy tone

89

p

(ord.) (h.v.)

97

mf *f* *mf* *ff*

"growl" "growl"

103

mf

(ord.) "growl" (ord.) "growl" (ord.)

$\text{♩} = 88$

112

ff

127 Flute (in C)

pp *p* *pp* *p* *pp*

136 **140** **5**

p *mf* *pp*

TAPE:
Soprano
(in C)

146 *espress.*

mf *p* *f* *mp*

155 **3**

f *ff* *fff* *mf*

162

p *pp*

169 **4** **174**

mf *f*

178

mp *f* *p* *f*

183 *Ad Libitum / Quasi Cadenza*
(half-valved)

mf *mp* *rfz* *ppp* *mp*

193 *Flute (in C)*

pp *fp* *f* *mf* *p*

201 (HORN)

pp

209 (ord.)

ppp *mp* *fp* *fp* *mf* *pp*

218

p *mf* *ff* *mp*

226 "growl" (no growl)

p *pp*

233 "growl"

p *mf* $\text{♩} = 120$

252

261 Clarinet (in C)

263

B \flat gliss. through slurs

268

A gliss. through slurs

"growl" (ord.)

273

280

Flute (in C)

G \flat gliss. through slurs

287

"growl" (ord.) "growl"

297

(ord.)

Con sord. =>

Con sord.

306

Senza sord.

310

320 (HORN)
half-valved,
ad libitum

Clarinet (in C) -----

11 19 350

ppp *pp* *pp* *mf*

357 (ord.)

p *p* *mp*

366

fp *mf* *fp* *f* *f*

373 "growl"

fp *f* *ff* *f* *f*

4

382

f *mp* *mf* *f*

finger tremolo

5

393

Cello (in C) -----

f *mf* *fp* *f*

400

ff *p* *p* *mp*

406

fp *f* *mf* *f* *mp*

413 (h.v.)

4

pp *p*

425 (ord.)

Con sord. =>

pp *p* *p*

435 "growl"

pp *p*

445 Flute (in C)

ff *mf* *p* *pp* *mp* *p*

7

458 Flute (in C)

Con sord. + half-valved

Senza sord. =>

mp *pp* *mp*

467 **473** Clarinet (in C)

(ord.)

Con sord. =>

pp *mp* *p*

478 Con sord. + half-valved

ppp *mp* *pp*